



**WORLD  
DIAMOND  
COUNCIL**



**WORLD  
DIAMOND  
COUNCIL**

# **The World Diamond Council and the Kimberley Process**

[www.worlddiamondcouncil.org](http://www.worlddiamondcouncil.org)



**WORLD  
DIAMOND  
COUNCIL**

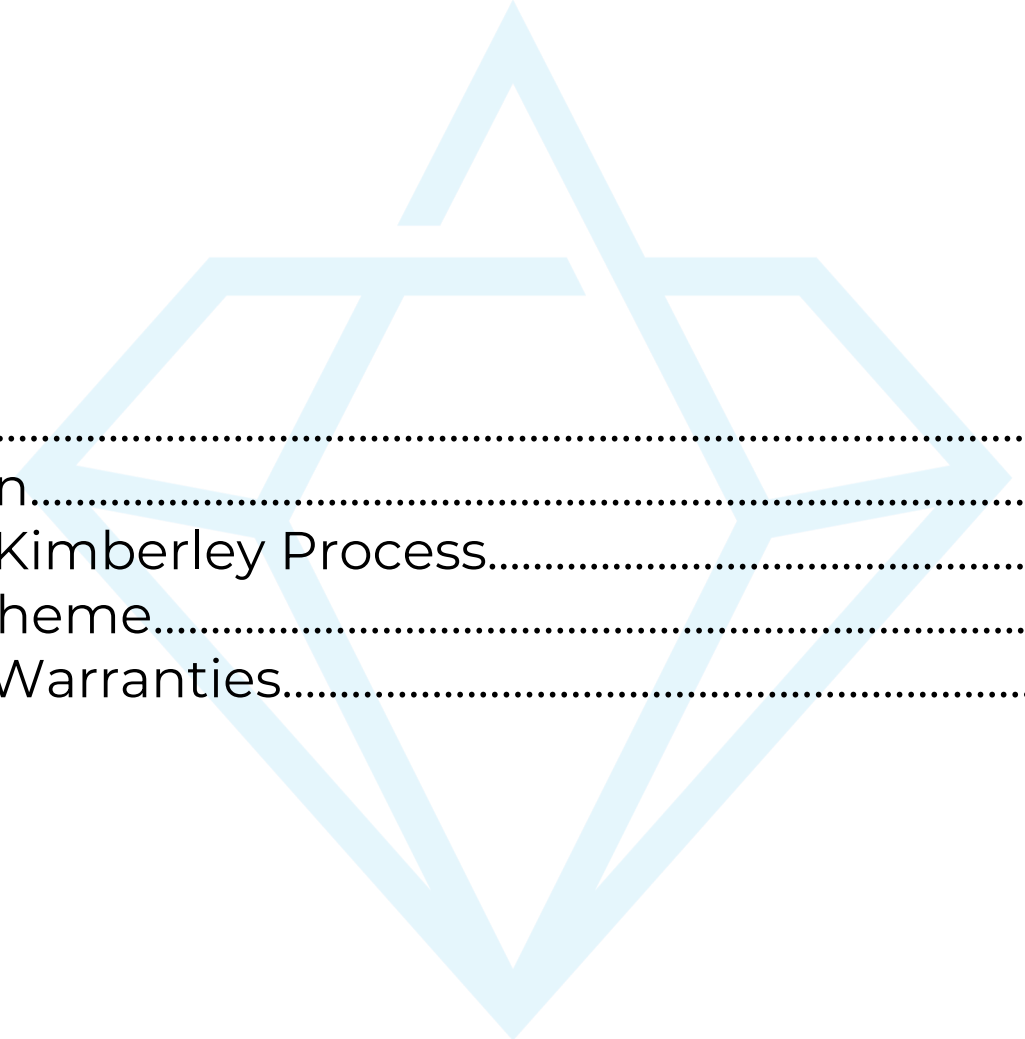


**Elodie Daguzan**

Executive Director, World Diamond Council

[ed@worlddiamondcouncil.org](mailto:ed@worlddiamondcouncil.org)

[www.worlddiamondcouncil.org](http://www.worlddiamondcouncil.org)



1. About the WDC.....	5
2. What is our mission.....	9
3. The WDC and the Kimberley Process.....	13
4. KP Certification Scheme.....	19
5. KP and System of Warranties.....	23

# ABOUT THE WDC



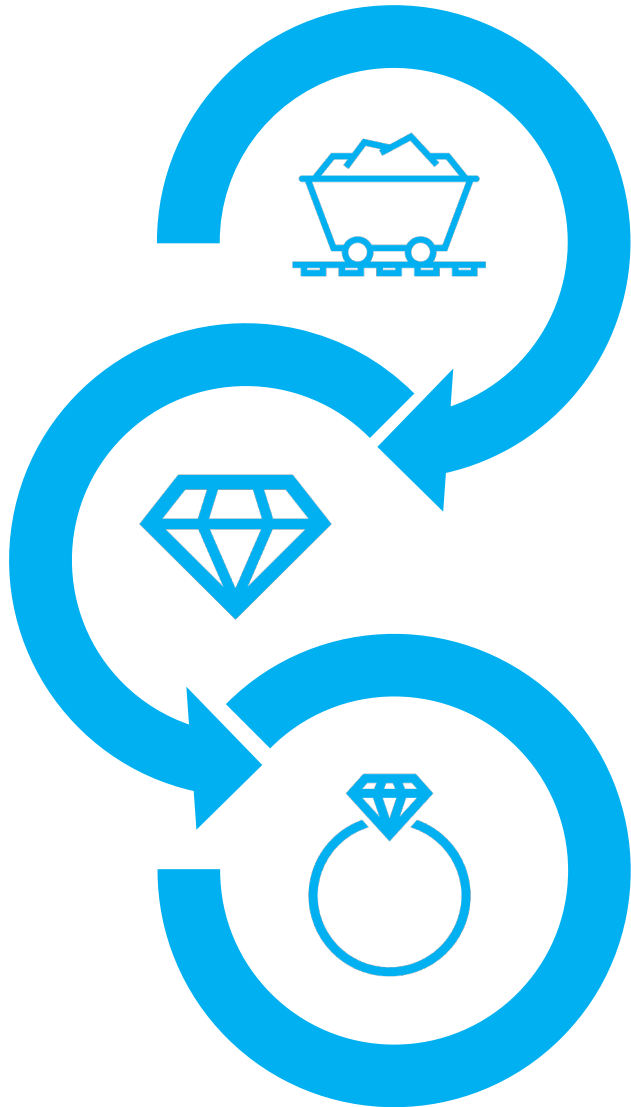
**The World Diamond Council** is an international organization representing **the entire natural diamond and jewelry value chain** including representatives from diamond mining, manufacturing, trading and retail.



Based in New York, the **WDC** was founded in **2000**, with the purpose to **combat** conflict diamonds\* and the sale of these for the benefit of **rebel forces.**



\* The Core Document of the Kimberley Process defines conflict diamonds as “*rough diamonds used by rebel movements to finance wars against legitimate governments.*”

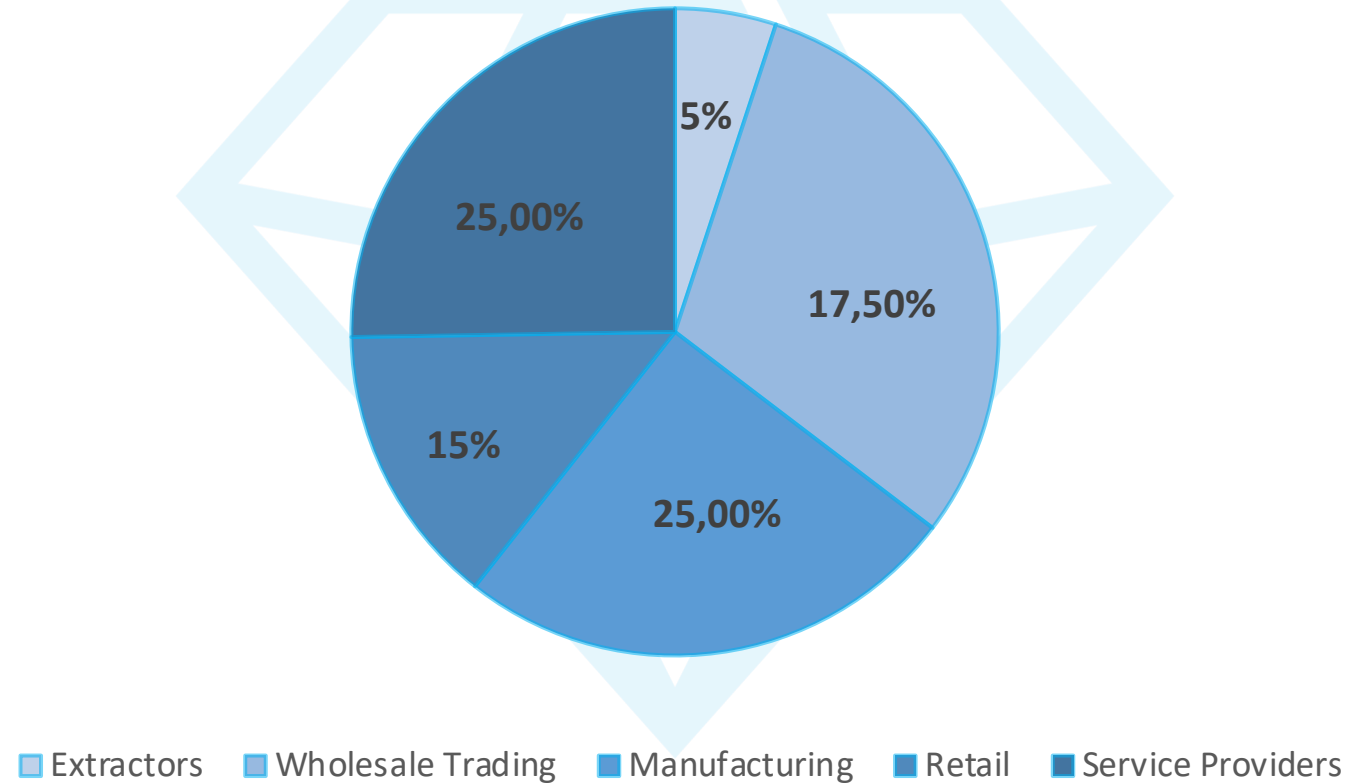


The **WDC** currently has 56 **members representing the diamond pipeline** such as:

- Extraction
- Trading & Polishing
- Retail
- Associations
- Industry service providers

Making it the only diamond body where **the entire diamond supply chain** is represented in full.

The world's **largest** diamond miners and jewelry retailers are WDC members, as well as numerous smaller companies.





# WHAT IS OUR MISSION



## WDC's primary mandate



- **Protect** the integrity of the natural diamond supply chain and grow consumer confidence in our product



- **Represent** the interests of the diamond industry and voice its positions within the Kimberley Process (KP)



- **Develop** self-regulation processes to further responsible sourcing, consumer confidence and sustainable development (WDC System of Warranties amongst others)

## WDC's partners of choice

To accomplish our mission successfully, we engage in cooperation with leading diamond and jewelry industry organizations such as:

- **CIBJO** (World Jewellery Confederation)
- **IDMA** (International Diamond Manufacturers Association)
- **NDC** (Natural Diamond Council)
- **RJC** (Responsible Jewellery Council)
- **WFDB** ( World Federation of Diamond Bourses)



That close cooperation enables consistency, relevance in shared projects as well as ensures that all parts of the pipeline are equally represented and heard.

## What is our Mission

Together with the **leading organizations**, WDC develops **coordinated actions** that will benefit and strengthen the diamond industry in the following areas:



- Responsible sourcing



- Consumer confidence



- Sustainable development

Diamond industry



# WDC & KIMBERLEY PROCESS

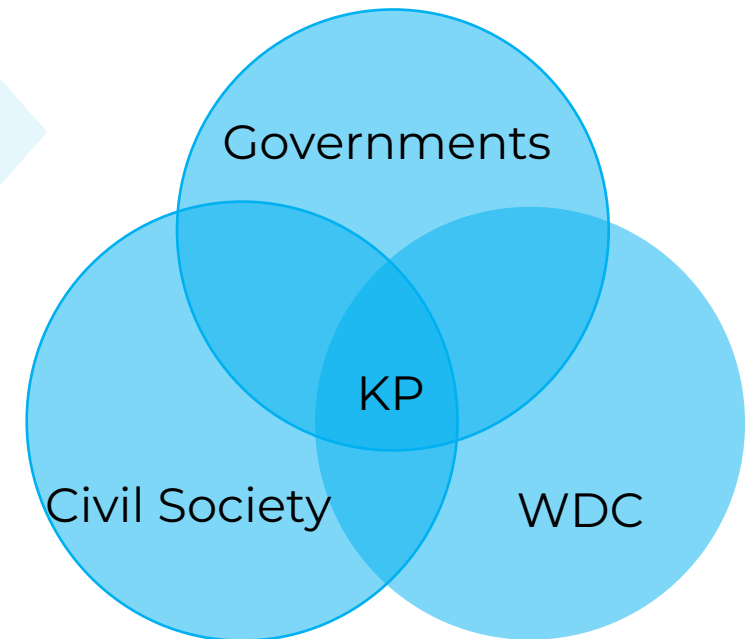


## KP's structure

The Kimberley Process is the commitment of a **tripartite coalition** to remove conflict diamonds from the global supply chain.

The WDC is the diamond and jewellery industry's official representative in the tripartite coalition of the **Kimberley Process (KP)**, which also includes representatives of **85 countries and the Civil Society Coalition** which represents **NGOs**.

Thanks to the KP members, **99.8%** of the global production of rough diamonds is now conflict-free. Before its inception, conflict diamonds represented 4%.



## Chairing the KP

**The KP's Core Document** (its “*Constitution*”) defines **conflict diamonds** as *rough diamonds used by rebel movements to finance wars against legitimate governments.*

The KP is **governed by the Chair**, who is an official appointed by the government of a designated **Participant country**. The Chairmanship rotates every year to another Participating country.

**Heading and directing** the management of the **KP administration**, the Chair serves for a full calendar year, starting on January 1, and oversees the **worldwide implementation of the KPCS**, as well as the operations of the **KP working groups and committees**.

At the beginning of the following calendar year, the position of Chair is assumed by the outgoing **KP Vice-Chair**, who is a **representative** of a government earlier selected by the KP Participants via consensus.



## WDC's role and place in the KP

Holding **Observer** status along with civil society, WDC takes no part in the decision-making process, which is **consensus-based** between Participating countries.

Our role is to advise, bring information, data & expectations from the consumers' markets to protect the interest of our industry.

WDC's primary objective is to **collaborate** with the Participants and the civil society towards the development and implementation of regulatory and voluntary systems to control the trade in rough diamonds covered by **the Kimberley Process Certification Scheme (KPCS)**.

To reach its objective, the WDC actively participates in **the 6 Working Groups & Committees of the KP**.



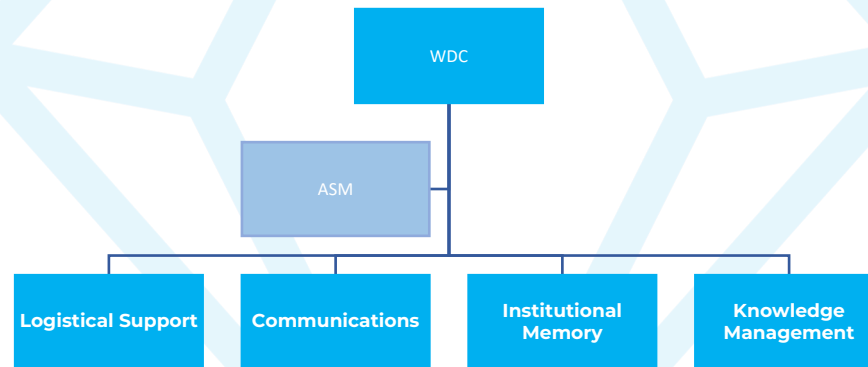


Much of the ongoing work of the KP takes place within its working groups and committees. These include:

- Working Group of **Diamond Experts (WGDE)**
- Working Group on **Monitoring (WGM)**
- Working Group on **Statistics (WGS)**
- Working Group on **Artisanal and Alluvial Production (WGAAP)**
- Committee on **Participation and Chairmanship (CPC)**
- Committee on **Rules and Procedures (CRP)**

## WDC's practical support to the KP

The WDC supports the Kimberley Process through technical and financial assistance, which includes the **Administrative Support Mechanism** (ASM).



**The Administrative Support Mechanism** (ASM) was established in 2013 and since has been hosted by the **WDC**.

The ASM provides ongoing logistic, and managerial assistance to the **KP Chair and Chairs of Working Groups bodies** as well as the entire “KP Family” through the management of the KP website which serves as institutional memory.

# **KIMBERLEY PROCESS CERTIFICATION SCHEME (KPCS)**



## One of a Kind

Launched at the beginning of **2003**, it is an international certification scheme **enforced** by KP Participating countries to ensure that rough diamonds moving through the **legitimate chain of distribution** do not include stones associated with conflict.

**It safeguards** the shipment of 'rough diamonds' (imports and exports) and **certifies them as conflict free by** outlining the rules that govern the trade in rough diamonds

Based on the **“KP Core Document”**, these rules and procedures are agreed upon by participating countries via consensus.

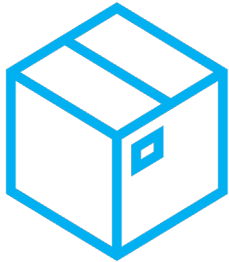
The concrete proof of the KPCS is the **KP Certificates** that member countries produced to allow movement of rough diamonds across borders.

The KP, via the KPCS, created the first ever **“custom office”** dedicated to one product:  
**DIAMONDS**

One of a kind “enterprise” never done before, never replicated and the **baseline of diamond trading**.

## “A license to operate”

Under the terms of the KPCS, members **must comply with strict requirements, such as:**



Certify shipments as conflict  
– free and provide the  
supporting certifications



Adhere to the minimum  
requirements and establish  
national legislations and  
import/export controls



Commit to transparent  
practices and to the  
exchange of critical  
statistical data



Trade only with fellow  
members who adhere  
to the fundamentals of  
the agreement

## KP in numbers

**59** Participants representing **85** countries under **1** United Nations mandate

**2** Observers: WDC & Civil Society

**1** KP Chair and **1** KP Vice Chair

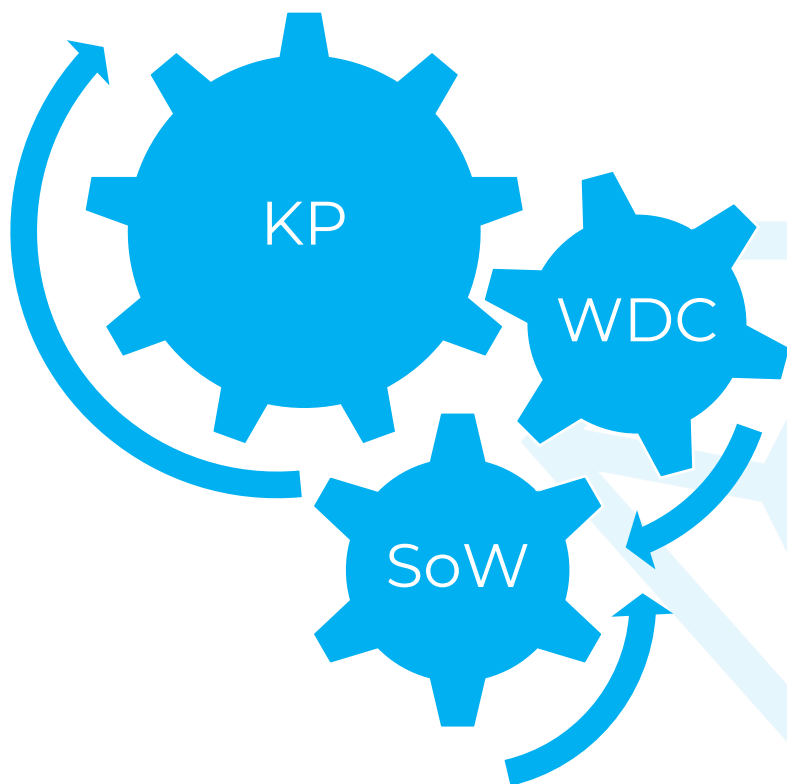
**1** Core Document and **6** main Working Groups and Committees + subgroups

Around **30** conference calls per year

**2** in-person gatherings per year in the country chairing the Process

# **SYSTEM OF WARRANTIES** **(SoW)**





To ensure that all diamonds being sold were sourced responsibly, the WDC created the **System of Warranties (SoW)** to strengthen and complement the **Kimberley Process Certification Scheme (KPCS)**, covering not only trade in rough diamonds but also in polished diamonds and diamond jewelry.

In 2021 the WDC launched **a dedicated SoW self-assessment mechanism.**



**The SoW is a warranty statement required to be applied on B2B invoices and memos** by buyers and sellers from the whole industry.

It needs to be included each time a diamond changes hands, assuring the next buyer that the goods are from conflict-free origin, in compliance with the **KPCS** and responsible business practices, that creates a **Chain of Warranties**.



The 2018 SoW comes with a Toolkit and an online self-assessment to include specific Guidelines relating to international conventions such as:

**Human rights, Labor rights, Anti-money Laundering, Anti Corruption**

	Old WDC SoW	New WDC SoW
Printed Warranty Statement	Yes	Yes
Usage Guidelines	No	WDC SoW Guidelines 2018
Compliance Self Assessment	No Limitation to abstract support of the KP	Yes Self Assessment as a key element of SoW implementation
Scope	KPCS, Industry Self-Regulation	KPCS, Industry Self-Regulation + universal standards on human rights, labor rights, AML/CTF and anti-corruption practices
Cross-recognition with Industry standards	No	Yes + OECD awareness

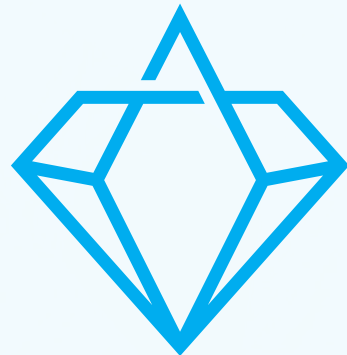
Go register and take the self-assessment at [www.wdcsow.org](http://www.wdcsow.org)

The WDC is an **active force** in leaving **no one behind**.

As we see the diamond industry moving forward in terms of **sustainability** and **enhanced responsible practices**, the WDC through its expanded SoW, provides **equal opportunities** to everyone involved, to move forward with these practices and policies hence **growing** consumer confidence in natural diamonds.



# Thank You!



**WORLD  
DIAMOND  
COUNCIL**